

GENERAL NOTES: FLOOR PLANS

1. REFER TO 5G011 FOR ADA INFORMATION.
2. REFER TO 5A504 FOR INTERIOR PARTITION INFORMATION.
3. REFER TO 5A605 - 5A508 FOR EXTERIOR WALL ASSEMBLIES.
4. REFER TO 5A601 FOR DOOR & FRAME DETAILS, LOCATIONS, AND HARDWARE INFORMATION.
5. ALL DIMENSIONS ARE TO FINISH FACE, FACE OF MASONRY OR CENTERLINE OF COLUMN OR GRID LINE UNLESS NOTED OTHERWISE.
6. DIMENSIONS AT GLAZING ASSEMBLIES ARE TO ROUGH OPENING OF ASSEMBLY UNLESS NOTED OTHERWISE.
7. USE DIMENSIONS SHOWN; IN NO CASE SHALL WORKING DIMENSIONS BE SCALED FROM DRAWINGS. CROSS-CHECK DETAILS AND DIMENSIONS SHOWN ON THE ARCHITECTURAL DRAWINGS WITH RELATED REQUIREMENTS ON THE STRUCTURAL, MECHANICAL, ELECTRICAL, PLUMBING, AND OTHER DRAWINGS AS APPLICABLE. NOTIFY ARCHITECT OF ANY DISCREPANCIES BEFORE PROCEEDING WITH THE WORK.
8. CONDITIONS AND DETAILS MARKED "TYPICAL" SHALL APPLY IN ALL CASES UNLESS SPECIFICALLY INDICATED OTHERWISE. TYPICAL DETAILS NOT REFERENCED ON DRAWINGS UNLESS NOTED OTHERWISE BY SPECIFIC NOTES AND DETAILS. WHERE NO SPECIFIC DETAIL IS SHOWN, THE CONSTRUCTION SHALL BE IDENTICAL OR SIMILAR TO THAT INDICATED FOR THE TYPICAL CONSTRUCTION OF THE PROJECT.
9. WHERE NO SPECIFIC STANDARDS ARE APPLIED TO A MATERIAL OR METHOD OF CONSTRUCTION TO BE USED ON THE WORK, ALL SUCH MATERIAL AND METHODS ARE TO MAINTAIN STANDARDS OF THE INDUSTRY AND, WHERE APPLICABLE, MANUFACTURER'S INSTRUCTIONS.
10. ESTABLISH AND VERIFY ALL OPENINGS AND INSERTS FOR ARCHITECTURAL, MECHANICAL, ELECTRICAL, AND PLUMBING WITH APPROPRIATE TRADES, DRAWINGS, AND SUBCONTRACTORS PRIOR TO CONSTRUCTION.
11. CONFIRM ALL ROUGH OPENING DIMENSIONS FOR DOORS AND WINDOWS PRIOR TO COMMENCEMENT OF CONSTRUCTION.
12. PROVIDE ALL NECESSARY ANCHORAGE BLOCKING, BACKING, FRAMING FOR HANDRAILS, DOOR STOPS, CASEWORK, SHELVING, MIRRORS, WALL-MOUNTED EQUIPMENT, AND ALL OTHER ITEMS AS REQUIRED FOR COMPLETE INSTALLATION.
13. REVIEW DOCUMENTS AND VERIFY DIMENSIONS AND FIELD CONDITIONS WHEN APPLICABLE. CONFIRM THAT WORK IS BUILDABLE AS SHOWN. ANY CONFLICTS OR OMISSIONS SHALL BE IMMEDIATELY REPORTED TO THE ARCHITECT FOR CLARIFICATION PRIOR TO THE PERFORMANCE OF WORK IN QUESTION.
14. LOADING OF CONSTRUCTION MATERIALS SHALL NOT EXCEED THE DESIGN LIVE LOAD PER SQUARE FOOT.
15. DOORS NOT LOCATED BY DIMENSION ARE TO BE CENTERED IN WALLS AS SHOWN OR LOCATED 4" FROM FACE OF STUD TO FACE OF JAMB.
16. GC TO PROVIDE ROUGH-INS FOR SECOND FLOOR FUTURE PLUMBING FIXTURES COORDINATE LOCATIONS WITH SECOND FLOOR UPFIT PLANS.

CLIENT

1 N University Dr, Plantation, FL, 33324

COPYRIGHT

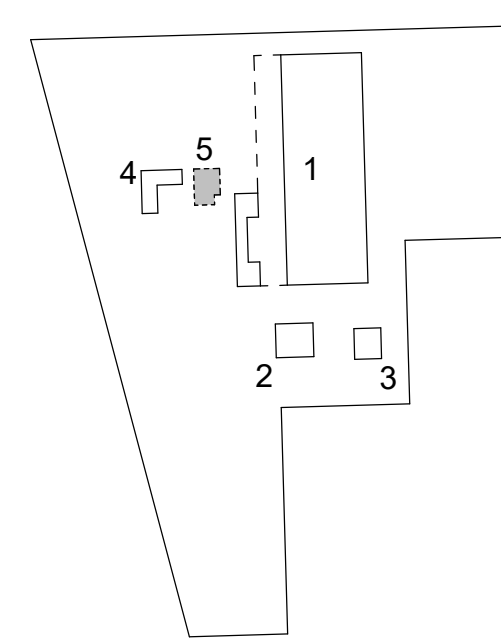
This drawing has been prepared solely for the intended use, thus any reproduction or distribution for any purpose other than authorized by Arcadis is forbidden. Written dimensions shall have precedence over scaled dimensions. Contractors shall verify and be responsible for all dimensions and conditions on the job, and Arcadis shall be informed of any variations from the dimensions and conditions shown on the drawing. Shop drawings shall be submitted to Arcadis for general conformance before proceeding with fabrication.

Arcadis Inc.

ISSUES

No.	DESCRIPTION	DATE
A	ISSUED FOR SPA - MOD	2025-11-12

SITE KEYPLAN



CONSULTANTS

ARCHITECT: ARCADIS ARCADIS INC. 7000 N. FEDERAL HWY. - 2ND FLOOR BOCA RATON, FL 33487 (561) 998-8000 contact: JAY KELLY email: jay.kelly@arcadis.com	CIVIL ENGINEER: ARCADIS ARCADIS INC. 7000 N. FEDERAL HWY. - 2ND FLOOR BOCA RATON, FL 33487 (561) 998-8000 contact: PATRICIA RAMALHO email: patricia.ramalho@arcadis.com
LANDSCAPE ARCHITECT: ARCADIS ARCADIS INC. 21 CUSTOM HOUSE ST. - 3RD FLOOR BOSTON, MA 02110 (617) 898-2900 contact: MICHAEL COLLIER email: phil.collier@arcadis.com	SITE ELECTRICAL: ARCADIS ARCADIS INC. 211 N. FAIRVIEW STREET SUITE 100 ROSELAND, NC 27061 (770) 861-6211 contact: KEVIN SCHAEFER email: kevin.schaefer@arcadis.com
STRUCTURAL ENGINEER FOR BUILDINGS: JEZERINAC JEZERINAC GROUP 1915 FORUM FL, 3A WEST PALM BEACH, FL 33401 (561) 323-7223 contact: BILLY RAOULA email: billy.raoula@jezerinacgroup.com	STRUCTURAL ENGINEER FOR BRIDGES: LANCASTER ENGINEERING, INC. LANCASTER ENGINEERING, INC. 2211 NE 34TH STREET FORT LAUDERDALE, FL 33308 (954) 771-0000 CONTACT: LANCASTER@LANCASTERENGINEERING.COM EMAIL: L-YES@LANCASTERENGINEERING.COM
MEPP: SEI South Engineering Consultants, Inc. SMITH ENGINEERING CONSULTANTS 2161 PALM BEACH LAKES BLVD. WEST PALM BEACH, FL 33403 (561) 694-3011 contact: STEVE P. HOCKMAN email: steve@smithengineeringconsultants.com	

SEAL

PRIME CONSULTANT

Suite 307A - 1451 W. Cypress Creek Road
Fort Lauderdale FL 33309 USA
tel 248 936 8000
www.arcadis.com

PROJECT

THE TRAINING AND COMMAND CENTER BUILDING
3201 W Copans Road
Pompano Beach, FL

PROJECT NO:

136677

DRAWN BY:

Author

PROJECT MGR:

PR/AS

SHEET TITLE

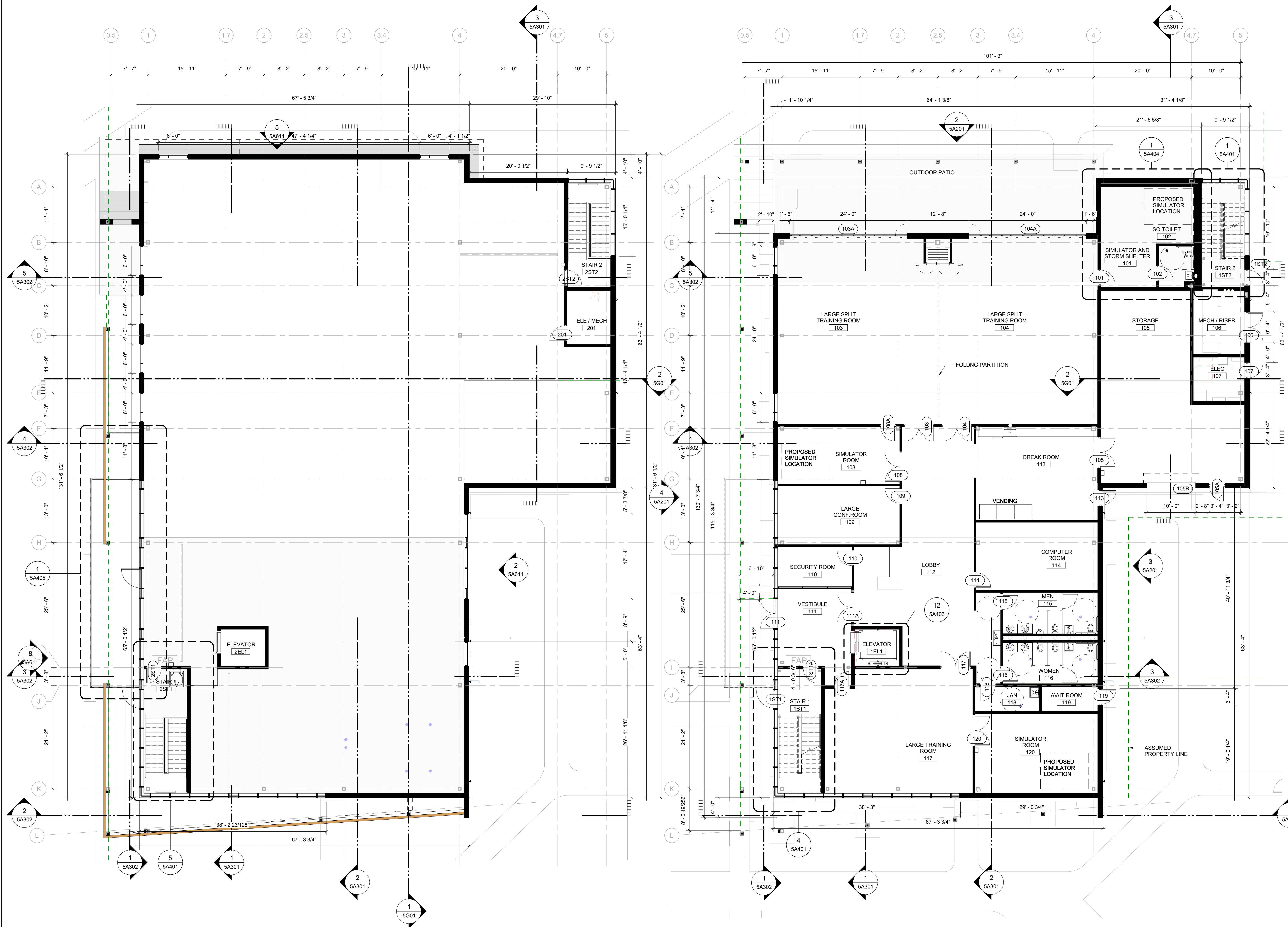
FLOOR PLAN

SHEET NUMBER

5A101

ISSUE

A



2 SECOND FLOOR PLAN

5A101 Scale: 1/8" = 1'-0"

1 FIRST FLOOR PLAN

5A101 Scale: 1/8" = 1'-0"